



D2. DESIGN

Fine design within your reach!



D2. DESIGN

D2. means fine design within your reach. We have been operating since 2008, but we have been gathering experience in the furniture industry for over 10 years now. We import modern designer furniture from China and Western Europe. Our products include, among others, chairs, tables and small tables, armchairs and sofas, all of which stand out in international design. We are also continually extending our offer of home interior accessories.

We follow global trends and keep looking for interesting ideas, introducing new collections to the Polish market. We want to provide our customers with attractive solutions at affordable prices.

SALES NETWORK

If you want to check the quality of our goods or you need advice on making a decision, we invite you to our business partner's shops (**check addresses on www.d2design.pl**)



WHAT SETS US APART?

DESIGN – We understand design and know that everyone wants something special for their interiors. The furniture we offer is modern, colourful, comfy and very practical.

AVAILABILITY– We offer furniture from verified suppliers who guarantee high product quality and great prices. We are open and flexible, so that our customers can access the best deals at all times.

INSPIRATIONS/TRENDSSETTING – We adore design and love to be inspired by it. We like to present innovative and functional solutions that give that special touch to interiors. If you need advice, do not hesitate to phone or write to us. We will be thrilled to help!





P016 PP / P016W PP

A modern chair made of high-quality polypropylene. The ergonomic shape in combination with a stable, chromed or wooden (light or dark) base provide maximum comfort for the seat. A perfect solution for those who appreciate design, functionality, comfort, and a modern design. The availability of a whole range of colours makes it perfect for a number of different interiors. The P018 PP or P018W PP version of the chair with armrests may be an interesting alternative for comfort-lovers.

H81 cm x W46 cm x D40 cm x SH42 cm





**P018W
PATCHWORK**

H82 cm x W62 cm x D58 cm x SH42 cm x AH65 cm



**P016W
PATCHWORK**

H83 cm x W46 cm x D50 cm x SH47 cm



**A-SHAPE
PATCHWORK**

H89 cm x W72 cm x D60 cm x SH49 cm x AH64 cm

A harmonious combination of materials and colours that will liven up your home. This patchwork chair is an interesting composition for those who appreciate the diversity of colours and textures. The seat is formed of small pieces of material with similar shapes. The connection with the base made from beech wood gives the chair a timeless look. Perfect for a youth's room and a living room. It will also warm up modern cafés, and provide positive energy to subtle interiors.



P018W PP / P018 PP

The P018W PP chair with a polypropylene seat was formed in a way that ensures maximum comfort. Wooden legs provide stability and allow you to relax in a safe way. Its ergonomic form and interesting base are a perfect composition, which will easily fit into both home and commercial interiors.

The P018W PP combines functionality, comfort, and design, and is available in several colour versions and a version with a chromed base.

For diversity-lovers we also recommend the P018RR PP chair placed on skids or the P018W Patchwork.



P018RR PP

H69 cm x W63 cm x D44 cm
x SH40 cm x AH57 cm



P018W PP

H80 cm x W62 cm x D47 cm
x SH45 cm x AH67 cm



P018 PP

H80 cm x W62 cm x DG47 cm
x SH45 cm x AH67 cm





BALANCE

The perfectly shaped, designer, and elegant Balance chair was based on designs from the 1960s. Its unusual shape will enchant the users. Interestingly, Balance is created from a single high-quality ABS moulding. The backrest together with the seat, thanks to a light springiness, provides a sense of immense comfort. Another advantage of this chair is that it can be stacked, i.e. one chair can be placed on another. Perfect for the kitchen or dining room. It will also fit a café, or a modern waiting room beautifully. Also available in a Junior version.

H83 cm x W48 cm x D59 cm x SH44 cm





High
H78 cm x W60 cm



Low
H70 cm x W56 cm

TOP



A distinctive “aerial” look of the legs of the top stool make it unique. The creators of the original wanted the stool to be practical and durable, and to provide a lot of balance when in use. Such barstool perfectly fits in modern and traditional interiors. It is made from solid wood and chromed steel.



A-SHAPE PP
H86 cm x W71 cm
x D47 cm x SH44 cm x AH60 cm



A-SHAPE UPHOLSTERED

H89 cm x W72 cm x D60 cm
x SH49 cm x AH64 cm



> Check out the samples
of the materials on [page 22](#).

A-SHAPE AND A-SHAPE PP

Comfortable, elegant, and very designer-like – A-SHAPE PP can enthral with its looks. The perfectly shaped polypropylene seat of the chair will make you think twice before you get up. The comfort of use is also provided by armrests, which will make using A-SHAPE PP even more enjoyable. Its ergonomic form together with a beech wood base are a perfect composition which will easily fit into both home and commercial interiors. Available in black and white, and also in the A-SHAPE version with material upholstery.





CYKLON



Stylish and modern, this Cyclone table is a real classic. The table top was made of high-gloss lacquered MDF, and the base is metal. The connections made from chromed steel are an interesting eye-catching feature. Perfectly fits with P016 PP or P018 PP chairs. Cyclone is dedicated to modern interiors with character. The table top is available in white and black.

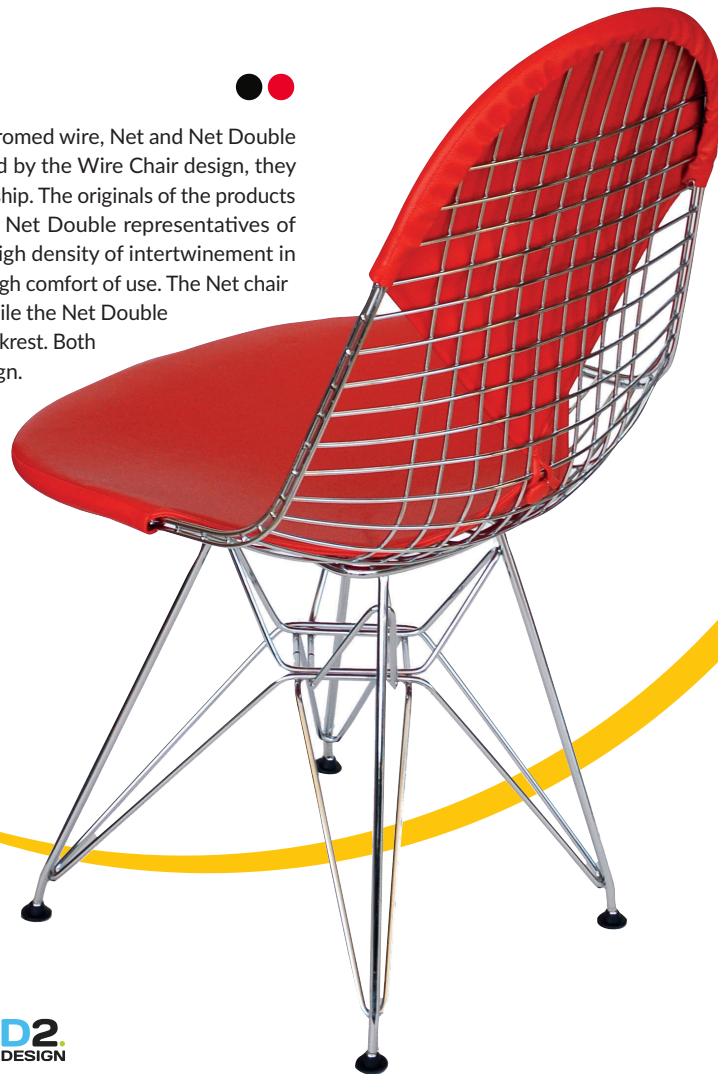
H72 cm x W100 cm

NET AND NET DOUBLE



Lightweight design plus stability? Made from chromed wire, Net and Net Double chairs perfectly combine those features. Inspired by the Wire Chair design, they thrill with their finesse and precision of workmanship. The originals of the products were made in 1951, which makes the Net and Net Double representatives of a timeless design. Their ergonomic design and high density of intertwinement in conjunction with comfortable cushions provide high comfort of use. The Net chair is provided with a cushion placed on the seat, while the Net Double is finished additionally with one located on the backrest. Both chairs perfectly fit interiors with a modern design.

H87 cm x W50 cm x D52 cm x SH45 cm





> Check out the samples of the materials on page 22.



CH 1081

This chair is very similar to the CH 1171 model. However, there are two aspects that make the models differ. The first is the base without wheels, and the second one is the lack of height adjustment in the CH 1081 model. You can choose between leather upholstery and upholstery made of mesh.

Available materials: leather and mesh.
H84 cm x W58 cm x D57 cm x SH46 cm x AH66 cm

CH 1171

A classic of design! Leather suspended between two metal profiles provides the chair with a feel of lightness, and the swivel base made from polished aluminium placed on wheels provide it with functionality. Thanks to the height adjustment mechanism and a cradle, you can freely adjust the chair to suit your needs. Lightweight form combined with functionality is a configuration worthy of your attention. The chair is also available in a version with a mesh base and with a chromed one.

Available materials: leather and mesh.
H79-88 cm x W59 cm x D58 cm x SH40-49 cm x AH60-69 cm





CH 2191

Do you belong to the group of people who work on a computer and spend hours at a desk? If so, the CH 2191 chair will certainly raise the standard of your work. The leather seat together with the backrest are lined with soft cushions, dramatically increasing the comfort of the seat. The base on wheels is made of polished or chromed aluminium and creates perfect stability. The CH 2191 has a height and cradle adjustment mechanism.

Available materials: leather.

H108-118 cm x W59 cm x D60 cm x SH48-58 cm x AH65-75 cm

CH 1191

The CH1191 is a higher version of the CH1171 model.

Available materials: leather and mesh.

H109-119 cm x W58 cm x D60 cm x SH48-58 cm x AH68-78 cm



CH 2171

Available materials: leather.

H78-88 cm x W59 cm x D60 cm x SH48-58 cm x AH65-75 cm





CHAIR

H81 cm x W81 cm x D88 cm x SH38 cm x AH49 cm

Available materials: leather and veneer plywood

FOOTREST

H41 cm x W67 cm x D54 cm

Available materials: leather and veneer plywood

> [Check out the samples
of the materials on page 22.](#)





VIP CHAIR AND FOOTREST

Extremely comfortable and elegant, the VIP chair has been designed for high comfort when in use. The main body of the chair is made of dark, bent plywood, whereas the seat and backrest are upholstered with soft Italian leather. The swivel base made of aluminium comes in two versions. The first one has the sides and bottom of the legs black lacquered and with a polished surface. The second version of the base is fully polished and more often occurs in combination with white leather. The rest comfort will be additionally increased by the footrest from the same series, which can easily be also used as a hassock. The VIP chair looks great in elegant and modern settings.



TRIX

The Trix coffee table is a synonym of elegance and modernity. A wooden base (in different colourations) along with hardened glass is a combination that exquisitely fits both modernist and traditional interiors. With the Trix table you will be able to have a coffee with your close friend or place some appetisers on it for an evening party. black, cherry, walnut, natural.

H40 cm x W125 cm x D90 cm



black ●
walnut ●

ELIPSA

A table of an original, wire base and a top made from multilayer plywood covered with a laminate is a designer proposal that works well in any space. The original shape and size of the Ellipse table will allow you to invite a group of friends round and put a number of tasty snacks on it.

H27 cm x W180 cm x D60 cm



COCO

Unconventional form and supreme comfort? If this is what you are looking for, then you can't miss the Coco chair. The prototype of this piece of furniture – the Coconut Chair – was designed by the famous designer George Nelson. As the name of the chair suggests, it refers to a part of a coconut, and thanks to the high-quality materials used to make it, provides unique comfort, making it easier to relax in even for the most reluctant users. Coco was created through a combination of fiberglass with a metal base and a leather seat. All of this makes Coco a piece of furniture that emanates class and raises the standard of the room in which it is located.

H87 cm x W105 cm x D80 cm x SH37 cm
Available materials: leather





BALANCE JUNIOR

H57 cm x W33 cm x D28 cm x SH28 cm



P016W JUNIOR AND P016 JUNIOR

P016W Junior, inspired by DSW, has been designed for small children. The ABS material from which it was made is a guarantee of quality. The wooden base of the chair provides it with elegance and a classic look that's simple in form. An innovative combination of design and tradition make the chair an interesting choice for both the children's room and the play room. The version of the chair inspired by the DSR model with the chromed base can be an interesting alternative for modernity-lovers.

H56 cm x W31 cm x D28 cm x SH33 cm



FANT STOOL

The Fant stool is design and functionality in one. It is made from the highest quality materials and will serve you for a long time. The form of the stool narrowing towards the top provides stability, and the rounded spaces between the legs provide it with an original character. Fant is not just a stool – it will also work well as a coffee table.

H37 cm x W52 cm x D47 cm



HARRY JUNIOR

Are you looking for a stable and comfortable chair for your child? Harry Junior, inspired by Diamond Junior, is the embodiment of modern style combined with functionality. Its construction, made from chromed wire, will provide your child with stability, a perfectly shaped backrest, and comfort. White or red, the upholstered seat cushion makes the use of the chair, inspired by Diamond Junior, even more fun. Your child will sit down at your favourite table in the dining room or in a restaurant with facilities for children.

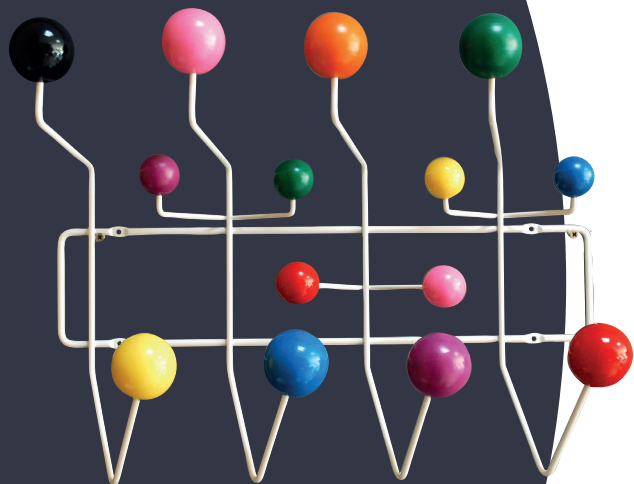
H50 cm x W33 cm x D35 cm x SH31 cm



ELEPHANT STOOL

H42 cm x W37 cm x D64 cm





HIT

Sophisticated shapes and a variety of colours of the Hit hanger will liven up and add a sense of humour to your interiors. This designer hanger is made from steel painted in white bars. Their ends hold wooden balls in different colours which makes it even more original. Hit can provide an interesting accent in the hallway or the bathroom.

H35 cm x W50 cm x D17 cm

VENEER PLYWOOD



Walnut



White Oak



Ebony



Cherry



Rosewood

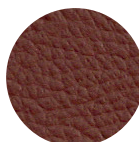
LEATHER



01



96



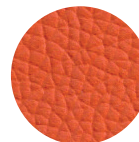
37



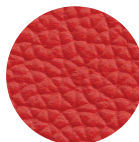
43



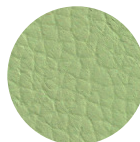
06



67

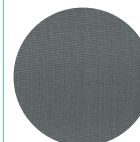


65

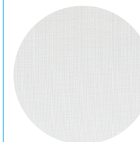


10

MESH

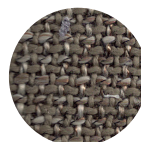


Black

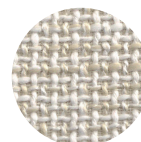


White

A-SHAPE



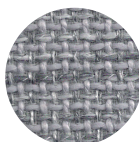
330-1



330-7



330-15



YB331-4



YB331-15



JBYO1045-11A

D2. CATALOGUE

Find more inspiration and fill the interior of your home with us. You will find the big **D2** catalogue at our business partners.





Fine design within your reach!